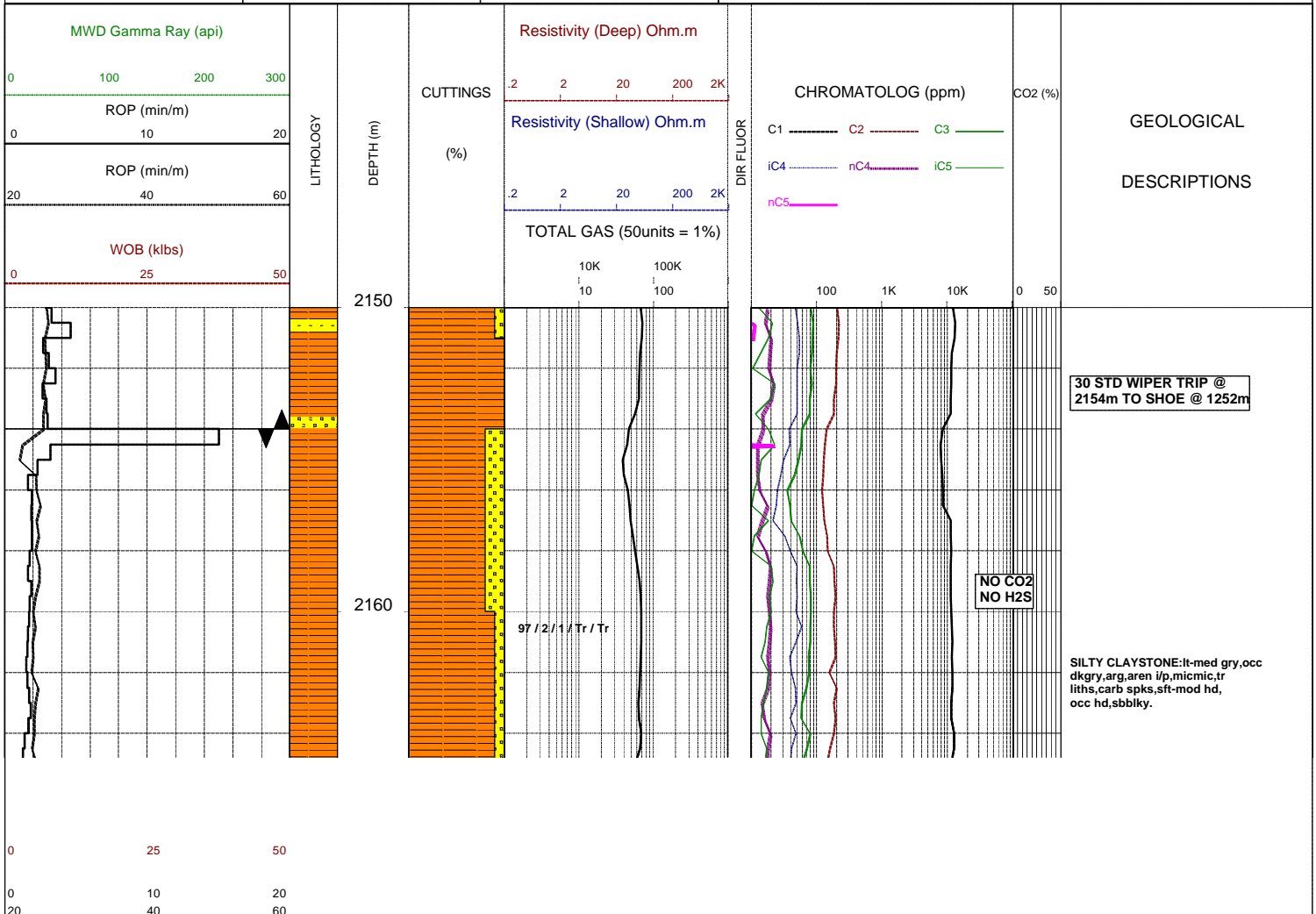
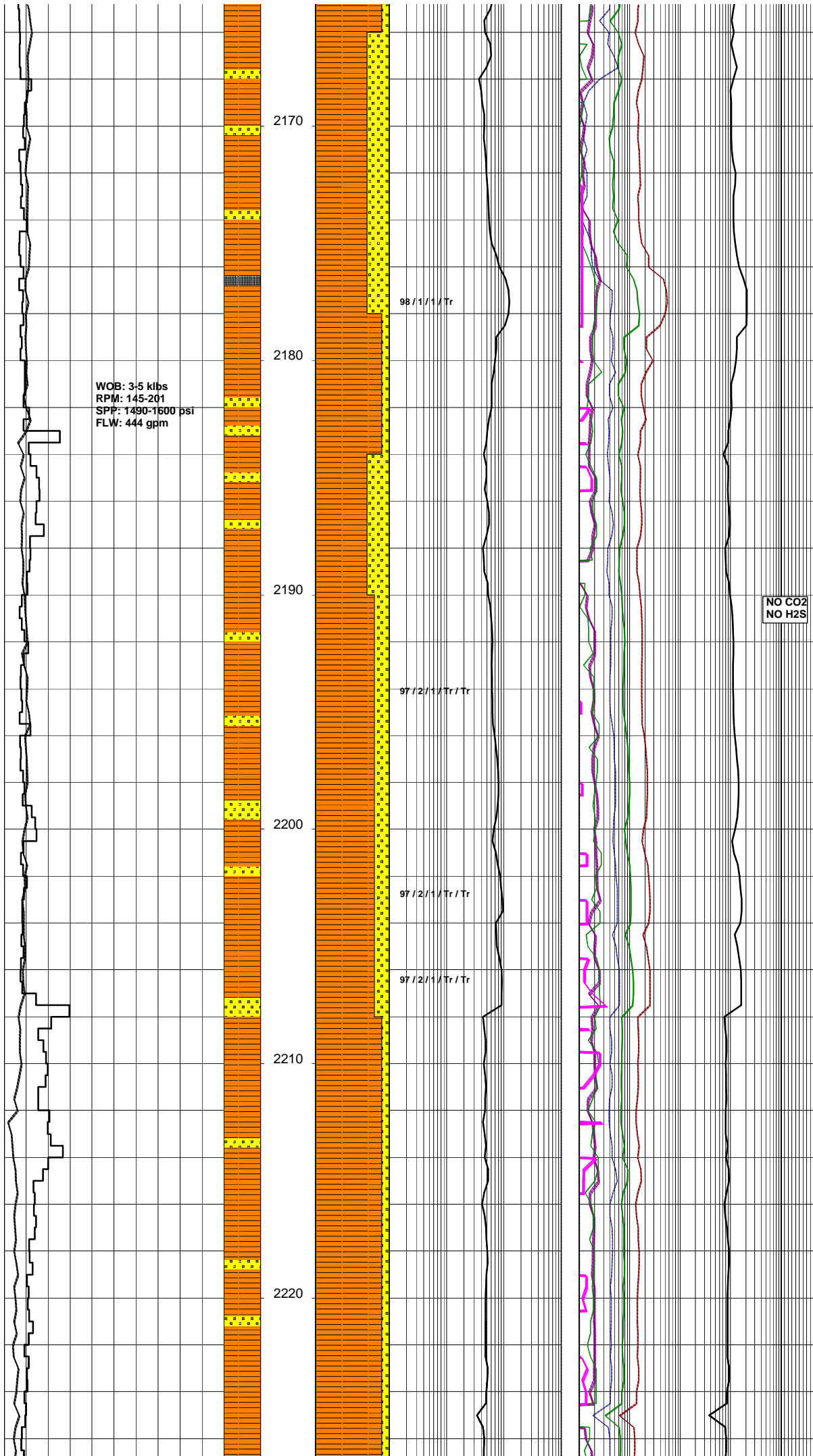


# GLENAIRE 1

Field :	Kelly Bushing : PEP 160	Rig : ENSIGN 32	Open Hole:	Cased Hole:	Loggers : J.SUTTON
Block:	Ground Level : STATUS	Spud Date : 08/09/2006	17.5" (12.25') 307m	13.375" (9.625') 303.5m	N.LUIS
State : VICTORIA	GRS80 Ellipsoid MGA94 Zone54 :	TD Date : XX/XX/2006	12.25" (8.5') 1255m	9.625" (7.0') 1252m	J.TRETHEWEY
Country : AUSTRALIA	Lat. : 37°34'47.03S	Total Depth : VVV	8.5" XXXXm		
Scale : 1/ 200	Long. : 140°59'52.25E	Final Status : WWW		RRRR SSSS AAA	

<b>LITHOLOGY</b> Conglomerate Coarse Sandstone Med Sandstone Calcareous Sst Silty Sandstone Siltstone Carb. Siltstone Calc. Siltstone Clay Limestone Dolomite Coal Anhydrite Gypsum Igneous Volcanic Metamorphic Cement	<b>ACCESSORIES</b> Pyrite Siderite Glauconite Feldspar Mica Ferrous Chert Calcareous Dolomitic Carbonaceous Lithoclast Breccia Foraminifera Corals Inoceramus Bryozoa Plant remains Fossils	<b>DRILLING DATA</b> Casing Shoe Bit Trip Wiper Trip Core DST Deviation Survey  <b>MUD DATA</b> MW - Mud Weight (lb/gal) FV - Funnel Viscosity (s/qt) PV - Plastic Viscosity (cps) YP - Yield Point (lb/100ftsq) Gel - Gel Strength (10sec) WL - Water Loss (cc/30min) pH - Acidity / Alkalinity Ck - Cake (32nd/inch) O/W/S - Oil / Water / Solids Cl - Chlorides (mg/L) K+ - Potassium (mg/L) Rmf - Res. Mud Filtrate (ohmm)	<b>ABBREVIATIONS</b> BOPD - Barrels of Oil Per Day BWPD - Barrels of Water Per Day CG - Connection Gas CO - Circulate Out COND - Condensate c/c - Crush Cut DST - Drill Stem Test FLOW - Flow Rate (gal/min) GCM - Gas Cut Mud GCW - Gas Cut Water GTS - Gas To Surface INJ - Injection of Mist (bbls/hr) LCM - Lost Circulation Material MMCFD - Million Cubic Feet / Day NGTS - No Gas To Surface NOTS - No Oil To Surface NFTS - No Flow To Surface OCM - Oil Cut Mud OG - Over Gauge OH - Open Hole OTS - Oil To Surface Q - Flow Rate REC - Recovery FLUOR - Fluorescence ROP - Rate Of Penetration RPM - Revolutions Per Minute RTSTM - Rate Too Small To Measure Rw - Resistivity water r/r - Ring Residue SCFM - Standard Cubic Ft/Min (air) SGCM - Slightly Gas Cut Mud SPM - Strokes Per Minute SPP - Stand Pipe Pressure SWC - Side-Wall Core TG - Trip Gas WOB - Weight On Bit
---	---	--	--





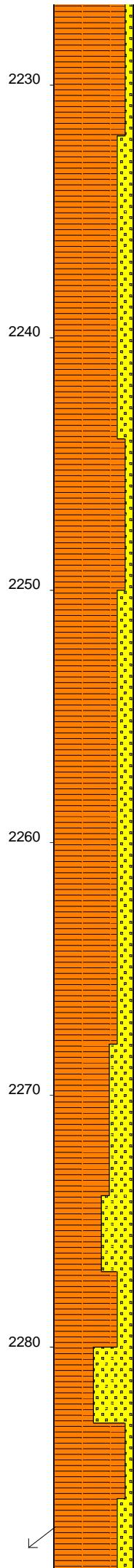
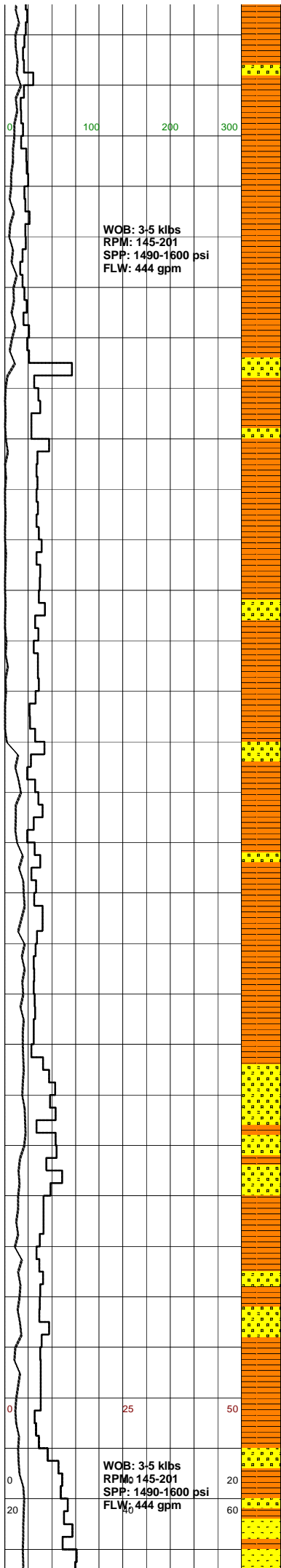
SILTY CLAYSTONE:lt-med gry,occ dkgr, arg, aren i/p, micmic, tr liths, carb spks, sft-mod hd, occ hd, sbbkly.

SANDSTONE:lt-med gry, wh, off wh, vf-f, occ med, pr-mod srt, sbang-sbrnd, wk calc cmt, occ sil cmt, arg mtx, tr feld, blk, brn liths, tr carb spks, mod hd, pr vis por, no flour.

SILTY CLAYSTONE:lt-med gry,occ dkgr, arg, aren i/p, micmic, tr liths, carb spks, sft-mod hd, occ hd, sbbkly.

SILTY CLAYSTONE:lt-med gry,occ dkgr, arg, aren i/p, micmic, tr liths, carb spks, sft-mod hd, occ hd, sbbkly.

SILTY CLAYSTONE:lt-med gry,occ dk gry, arg, aren i/p, grd to SLTST, micmic, tr liths, carb spks, sft-mod hd, occ hd, sbbkly.



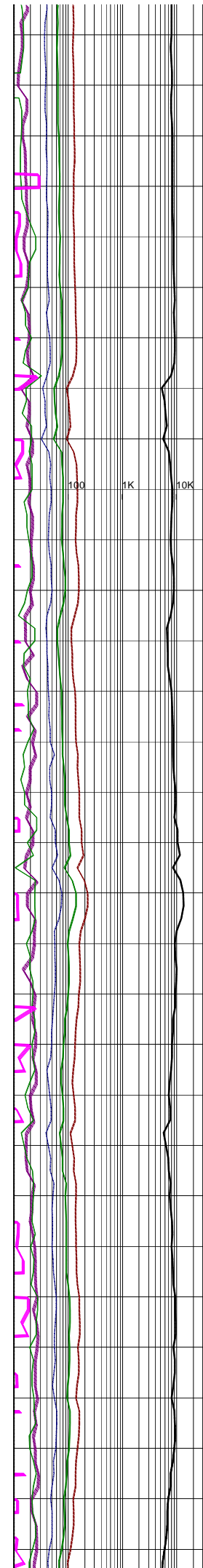
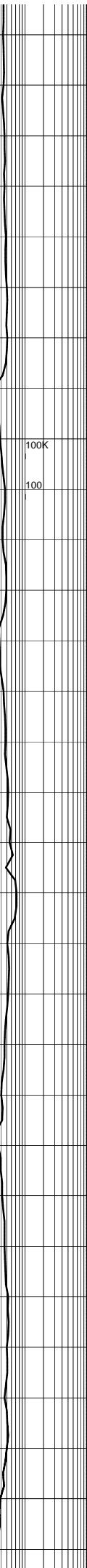
97 / 2 / 1 / Tr / Tr

10K 100K

10 100

97 / 2 / 1 / Tr / Tr

96 / 2 / 1 / 1 / Tr



NO CO2  
NO H2S

SANDSTONE:lt-med gry,wh,off wh, vf-f,occ med,pr-mod srt,sbang-sbrnd,wk calc cmt,occ sil cmt, arg mtx,tr feld,blk,brn liths, tr carb spks,mod hd,pr vis por, no flour.

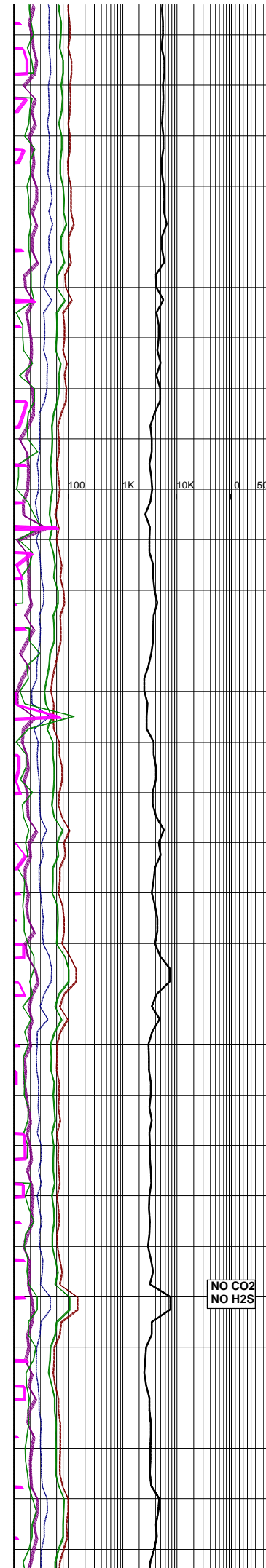
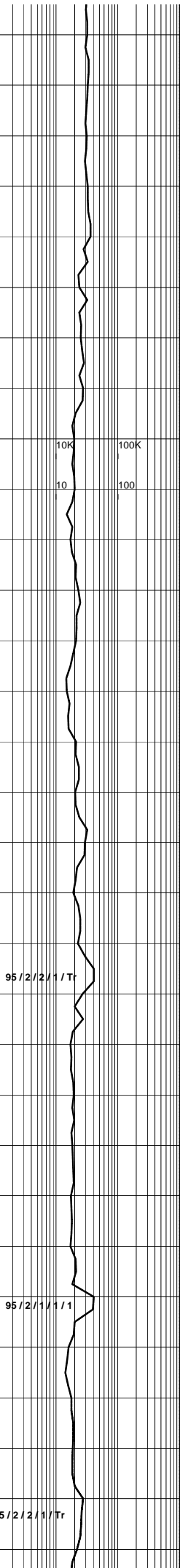
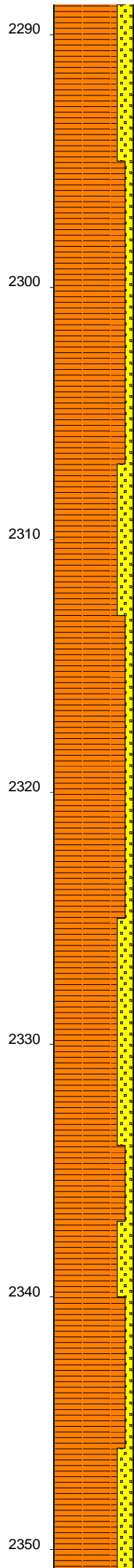
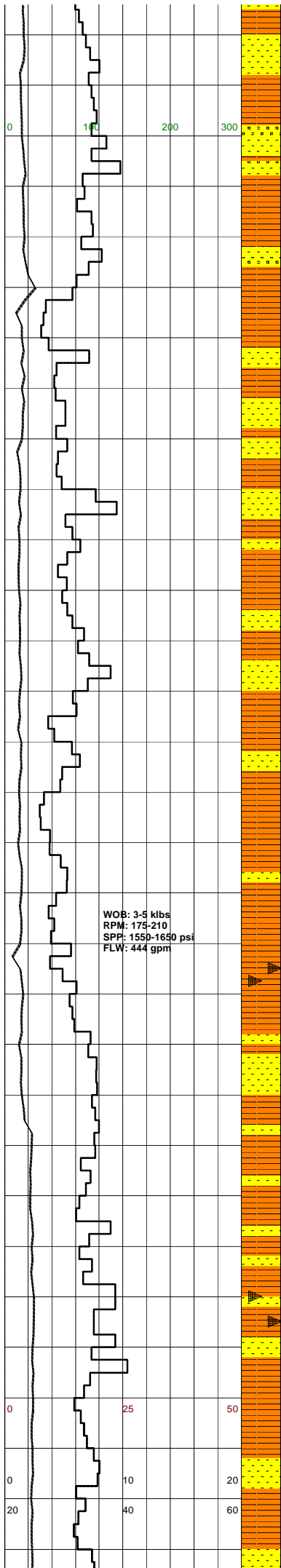
SILTY CLAYSTONE:lt-med gry,occ dk gry/brn,arg,aren i/p,grd to SLTST i/p,mnr micmic,tr lt brn liths & carb spks,mod hd,sbbkly.

SANDSTONE:lt gry/brn,occ off wh & med gry,vf-f,sbang-sbrnd,mnr calc & sil cmt,tr arg mtx,tr brn liths,frimod hd,pr vis por no flour.

SILTY CLAYSTONE:lt-med gry,med-dk gry i/p,tr lt grn/gry,arg,mnr aren, grd to SLTST,micmic,tr brn liths & carb spks,mod hd-hd,sbbkly-sbfiss.

NO CO2  
NO H2S

SANDSTONE:lt-med gry,wh,off wh, vf-f,occ med,pr-mod srt,sbang-sbrnd,wk calc cmt,occ sil cmt, arg mtx,tr feld,blk,brn liths, tr carb spks,mod hd,pr vis por, no flour.



SANDSTONE:om wh,pl gry,lt-med  
 grn i/p,vf-f,grd to SLTST i/p,mod  
 srt,sbrnd-sbang,mnr calc & sil cmt,  
 tr arg mtx,tr lt brn liths & carb spks,  
 fri-mod hd,pr vis por,no fluor.

SURVEY @ 2288m: 5.0° 171

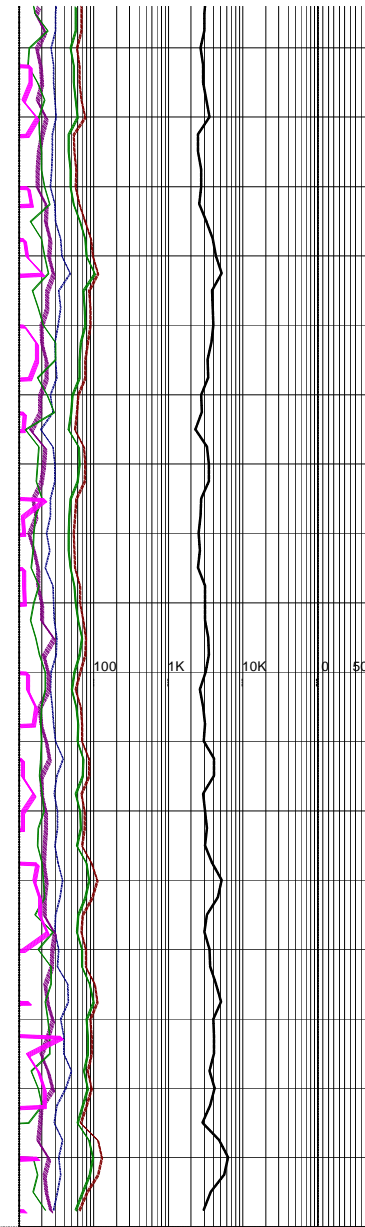
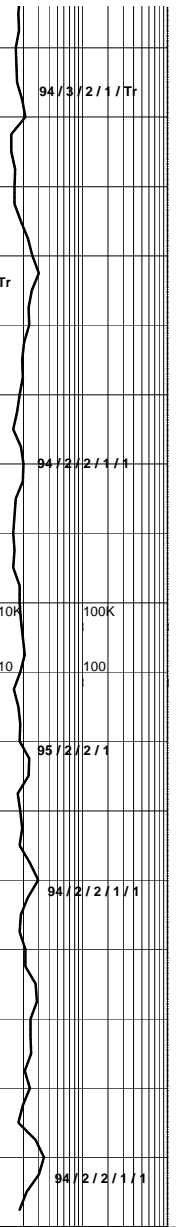
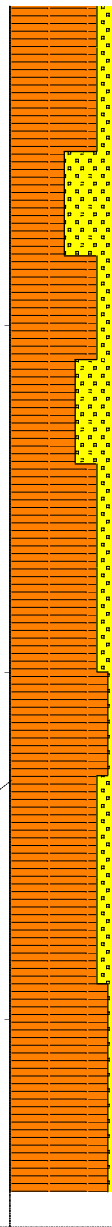
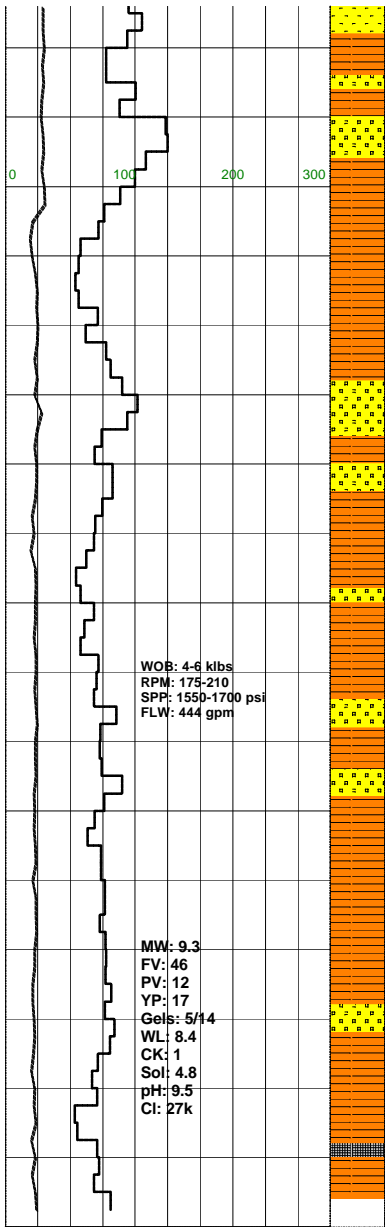
SILTY CLAYSTONE:med gry/brn,lt-  
 med gry,micmic,tr brn liths,frm-mod  
 hd, sbblky-sbfiss.

SANDSTONE:off wh,pl gry,vf-f,wt  
 srt,sbrnd-sbang,tr calc cmt,mnr sil  
 cmt,tr arg mtx,tr liths,frm-mod hd,  
 pr vis por,no fluor.

SILTY CLAYSTONE:lt-med gry,lt  
 brn/gry,plgrn/gry i/p,arg,aren i/p,grd  
 to SLTST,mnr micmic,sil i/p,pred  
 mod hd,hd i/p,sbblky.

NO CO2  
 NO H2S

COAL:(Tr)blk,dk brn,ea,vit i/p,  
 slty,brit-frm,sbblky,hckly-unevn.



SANDSTONE: off wh, pl, gry, lt brn  
i/p, vf-f, wl srt, sbrnd-sbang, mnr sil  
cmt & off wh arg mtx, tr brn liths, fri,  
pr vis por, no fluor.

SANDSTONE: wh, off wh, lt-med gry,  
f-vf, occ med, mod srt, sbang-sbrnd,  
occ sil cmt, wk calc cmt, abdt arg  
mtx, tr feld, abdt blk, brn, grn  
liths, mod hd, pr vis por, no flour.

SURVEY @ 2374m: 6.0° 9T

SILTY CLAYSTONE: lt-med gry, occ  
dk gry, grn gry, occ brn, arg, aren  
i/p, grd to SLTST, micmic, tr liths,  
tr carb spks, sft-mod hd, sbblky.

COAL: (Tr) blk, dk brn, ea, vit i/p,  
sily, brit frm, sbblky, hckly-unevn.

PULL OUT OF HOLE TO CHANGE  
BHA @ 2386m.

